

Big 10 Championship 2025



Oil Pattern Distance: **42 Feet**
 Forward Oil Total: **12.95 mL**
 Forward Boards Crossed: **259 Boards**

Reverse Brush Drop: **42 Feet**
 Reverse Oil Total: **21.55 mL**
 Reverse Boards Crossed: **431 Boards**

Oil Per Board: **50 uL**
 Volume Oil Total: **34.5 mL**
 Total Boards Crossed: **690 Boards**

Start	Stop	Loads	Speed	Crossed	Start	End	Feet	T.Oil
1 2L	2R	6	14	222	0.0	9.9	9.9	11100
2 2L	2R	1	18	37	9.9	12.4	2.5	1850
3 2L	2R	0	22	0	12.4	42.0	29.6	0

Navigation: [Back] [Forward] [Reverse] [More]

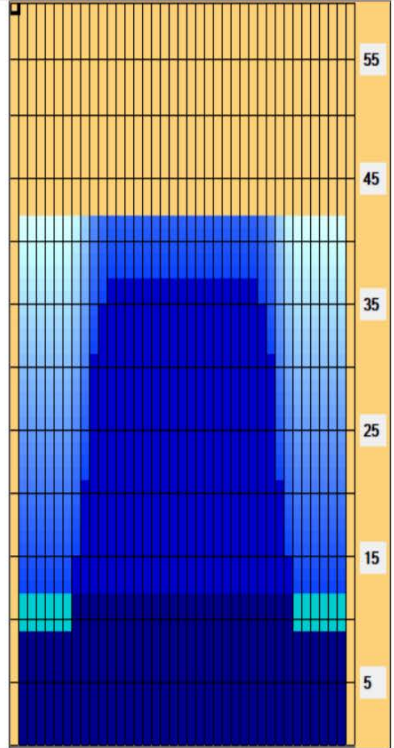
Start	Stop	Loads	Speed	Crossed	Start	End	Feet	T.Oil
1 2L	2R	0	30	0	42.0	37.0	-5.0	0
2 12L	12R	1	14	17	37.0	35.1	-1.9	850
3 11L	11R	2	14	38	35.1	31.2	-3.9	1900
4 10L	10R	4	18	84	31.2	21.0	-10.2	4200
5 9L	9R	3	14	69	21.0	15.1	-5.9	3450
6 8L	8R	3	14	75	15.1	9.2	-5.9	3750
7 2L	2R	4	14	148	9.2	1.3	-7.9	7400
8 2L	2R	0	14	0	1.3	0.0	-1.3	0

Navigation: [Back] [Forward] [Reverse] [More]

Conditioner:
Type In or Select One

TransferType:
Type In or Select One

- Forward
- Reverse
- Combined
- Buff



Item	3L-7L:18L-18R	8L-12L:18L-18R	13L-17L:18L-18R	18L-18R:17R-13R	18L-18R:12R-8R	18L-18R:7R-3R
Description	Outside Track:Middle	Middle Track:Middle	Inside Track:Middle	Middle: Inside Track	Middle:Middle Track	Middle:Outside Track
Track Zone Ratio	2.18	1.21	1	1	1.21	2.18

